

## Fitel Ninja NJ001

Handheld, Single Fiber Fusion Splicer



### Features and Benefits

- **Enhanced Ease of Use** - The NJ001 features a proportionately wide splicing chamber for easier fiber loading. When compared with the S123C unit, the NJ001 offers 400% more space around the fiber holders, making this one of the most user-friendly splicers available.
- **Improved Visibility** - Three LED lights illuminate the entire splicing chamber with more than 300 Lux.

This light intensity improves visibility, making it easier to perform work in low-light environments. In addition, the light on the V-groove is 600% brighter than that of the S123C unit.

- **Industry-First Detachable V-Groove** - The NJ001's V-groove is detachable for easy cleaning and optimal maintenance.

---

### Overview

The FITEL NINJA NJ001 Handheld, Single Fiber Fusion Splicer delivers fast and reliable fiber splicing under even harsh environmental conditions. Combining portability and ease of use in a ruggedized body, the NJ001 offers powerful splicing performance with the durability needed for use in the field.

### Product Description

While the NJ001 design is compact and low profile, its large battery capacity helps save on time by allowing 100 splicing and heating cycles in one charge. Offering consistent splicing and outstanding ease of use, the NJ001 is suitable for use with all Metro, LAN and FTTH fibers (including ultra-bend insensitive fibers).



A Furukawa Company

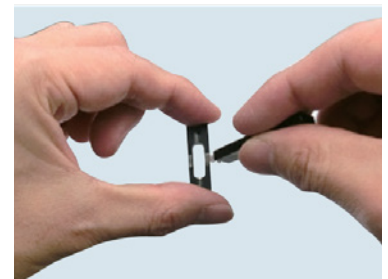
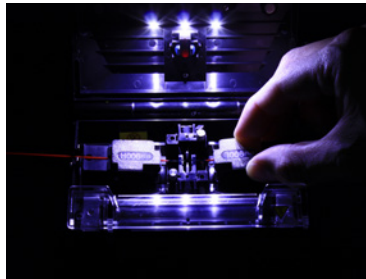
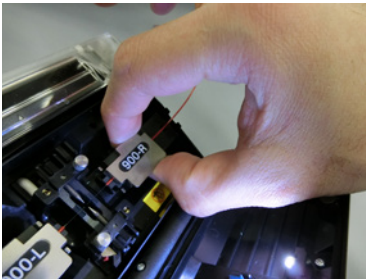
Authorized Distributor of FITEL Products  
in the Americas



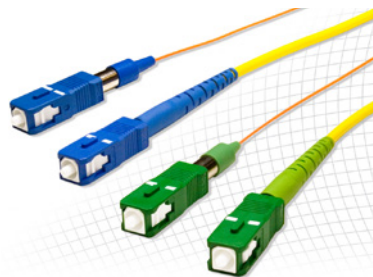
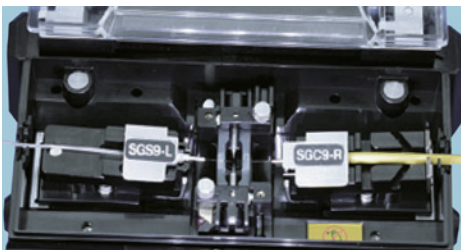
[www.ofsoptics.com](http://www.ofsoptics.com)

### Other Features

- **Wider splicing chamber** for easier fiber loading
- **Three LED Lamps** - Enhanced illumination for easier splicing in low-light environments
- **High propulsion motor** - A powerful motor with a propulsion of 8N helps ensure stable splicing even for highly rigid cables including drop and indoor cables
- **Ruggedized design** - The ruggedized body is designed to endure shocks and impact along with exposure to water and dust
- **Compatibility with Splice-on-Connector (SOC)** - The detachable heater clamp allows work with SOC
- **100 cycles** (Splicing and Heating) 1
- Available for ALL Metro/LAN/FTTx fibers, including ultra-bend insensitive fibers
- **Easy maintenance** - The industry's first detachable V-groove allows ease of cleaning and maintenance. The NJ001 also features toolless electrode replacement and a mirror-free alignment system.
- **PC interface software** - Easy software upgrades, splice management, program editing and export of splice results
- **Auto Start Function** - Heating and splicing processes



### Compatible with Splice-on-Connectors



### FITEL Splicer SOC partners



### Under Tough Environments

- Drop resistant – 76 cm drop tests from 5 different angles <sup>4</sup>
- Water resistant – Equivalent to IPX2 rating drip proof <sup>4</sup>
- Dust resistant – Equivalent to IP5X rating dust proof <sup>4</sup>

<sup>1</sup> In semi-auto splicing mode and regular heating mode  
<sup>2</sup> "fis" is a registered trademark of Fiber Instrument Sales, Inc.  
<sup>3</sup> Seikoh Giken is a registered trademark of SEIKOH GIKEN CO., LTD  
<sup>4</sup> Standard operations could be properly carried out after having conducted the above tests. These tests were performed at the Furukawa Electric Lab with no significant damage. This does not guarantee that the machine will always be undamaged under these conditions



Drop Resistant



Water Resistant



Dust Resistant

## Product Specifications

Applicable Fibers	SM (ITU-T G.652), MM (ITU-T G.651), DSF (ITU-T G.653), NZD (ITU-T G655), BIF/UBIF (Bend Insensitive Fiber ITU-T G.657)
Cladding Diameter	125 µm
Coating Diameter	250 ~ 900 µm
Fiber Cleave Length	5 to 10 mm or 16 mm
Average Splice Loss	SM: 0.05 dB, MM: 0.02 dB, DSF 0.08 dB, NZD 0.08 dB, BIF/UBIF: 0.05 dB
Splice Time	13 seconds
Heat Time	17 seconds (40 mm sleeve <sup>5</sup> ) , 20 seconds (60 mm sleeve <sup>5</sup> ) (Pre-heat mode <sup>5</sup> ) 31 seconds (S922: 40 mm sleeve, S921: 60 mm sleeve) (Regular mode <sup>6</sup> )
Splice Programs	Max. 150
Heat Programs	Max. 30
Automatic Heating Start	Available
Applicable Sleeves	20/40/60 mm
Fiber Holder	Tight holder (Loose tube applicable) or Removal fiber holder system
Tension Test	1.96 N
Splice Return Loss	60 dB or more
Fiber Image Magnification	58X
Splice Memory	Max. 1500
Image Capture Capacity	Last 100 images to be automatically captured + Up to 24 images to be stored permanently
Dimension	124W × 161D × 64.5H mm (not including rubber pad) 139W × 176D × 71H mm (including rubber pad)
Weight	970 g (with battery)
Monitor	3.5" color LCD monitor
Propulsion (motor)	8 N (Designed value)
Data Output	USB ver. 2.0 mini
Battery Capacity <sup>7</sup>	Typically 100 splice/heat cycles <sup>7</sup>
Wind Protection	Max. wind velocity of 15 m/s.
Operating Temperature	-10° to +50°C (without excessive humidity)
Storage Temperature	-40° to +60°C (without excessive humidity)
Humidity	0 to +95% RH (non condensing)
Power Source	AC input 100 to 240 V (50/60 Hz), DC Input 11 to 17 V without any change of hardware

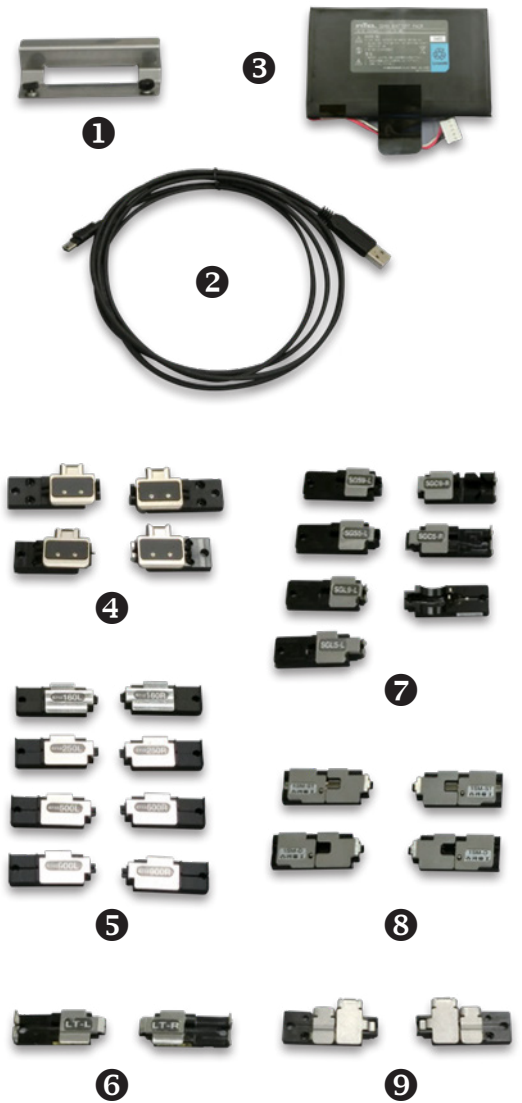
<sup>5</sup> The heating time may vary depending on the type of sleeves.

<sup>6</sup> The first heating cycle after turning the power on can be longer than the standard heating time.

<sup>7</sup> The number of splicing and heating cycles the machine can perform with a fully charged battery at 20°C in semi-auto splicing mode and regular heating mode. The number of cycles may vary depending on the battery status and operating conditions.

# Fitel Ninja NJ001

Optional Components			
Item		P/N	Quantity
1.)	Cooling Tray	CTX-01	1
2.)	USB Cable	USB-01	1
3.)	Battery Pack	S946	1
4.)	Tight Holder: 16 mm Cleave length	S712T-016	1 pair
	10 mm Cleave length	S712T-010	1 pair
5.)	Fiber Holder 160 µm coated fiber	S712S-160	1 pair
	250 µm coated fiber	S712S-250	1 pair
	500 µm coated fiber	S712S-500	1 pair
	900 µm coated fiber	S712S-900	1 pair
6.)	Fiber Holder Loose Tube Fiber (Left side)	S712S-LT-L	1 pair
	Loose Tube Fiber (Right side)	S712S-LT-R	1 pair
7.)	SOC Holders		1
	Seiko Giken FC/SC ferrule (9 mm)	S712C-SGS9-L	1
	Seiko Giken FC/SC ferrule (5 mm)	S712C-SGS5-L	1
	Seiko Giken LC ferrule (9 mm)	S712C-SGL9-L	1
	Seiko Giken LC ferrule (5 mm)	S712C-SGL5-L	1
	Seiko Giken TOUCH Plus SC (9 mm)	S712C-SGS9C-R	1
	Diamond E-2000/F-3000™ LC/SC connector	S712C-DM25-L	1
	Seiko Giken Cordage (5 mm)	S712C-SGC5-R	1
	Seiko Giken Cordage (9 mm)	S712C-SGC9-R	1
	Diamond Cordage (5 mm)	S712C-DMC5-R	1
8.)	Drop/Indoor Cable Holders		
	Drop/Indoor Cable Holder	S712S-1SM-D	1 pair
	Low-friction Indoor Cable Holder	S712S-1SM-ST	1 pair
9.)	Fiber and Cordage Common Holder	S712F-CM	1 pair
	Smart Fuse	SF-01	1
	Software Interface for Machine		





Standard Package

Standard Package		
Item	P/N	Quantity
1.) FITEL NINJA NJ001 Main body (including battery)	NJ001-X-A-0001	1
2.) Hard Carrying Case	HCC-03	1
3.) Spare Electrodes	ELR-01	1 pair
4.) AC Adapter	S978A	1
5.) AC Cable Cord	—	1
6.) Electrode Sharpener	D5111	1
7.) Cleaning Brush	VGC-01	1
User Manual (CD)	UMC-01	1
User Manual	FTS - 347	1

Ordering Information	
Code	Description
NJ001-1-V1	Splicer with 16 mm Fiber Holder S712T-016
NJ001-2-V1	Splicer with 10 mm Fiber Holder S712T-010
NJ001-2-EX-10-V1	Splicer with cleaver, S712T-010 holder, S211B stripper, S943B battery, wipes and fluid
NJ001-EX-900-V1	Splicer with cleaver, S712S-250 and S712S-900 fiber holders, S211B stripper, S943B battery, wipes and fluid

For additional information please contact your sales representative.

You can also visit our website at [www.ofsoptics.com](http://www.ofsoptics.com) or call 1-888-fiberhelp (1-888-342-3743) USA or 1-770-798-5555 outside the USA.

**Fusion Splicer Customer Service, Training and Service Center**

Toll Free: 866-452-9516  
 Phone: 678-783-1090  
 Fax: 678-783-1093  
 Email: [splicers@ofsoptics.com](mailto:splicers@ofsoptics.com)

**OFS Corporate Headquarters**

2000 Northeast Expressway  
 Norcross, Georgia 30071, USA  
 Toll Free: 888-Fiber-Help  
 Intl. Phone: 770-798-5555



Copyright © 2017 OFS Fitel, LLC.  
 All rights reserved, printed in USA.

OFS Marketing Communications  
 Doc ID: FITEL-NJ001 Date: 11/17

“Bound to Innovate” is a registered trademark of Furukawa Electric Co., Ltd.  
 FITEL is a registered trademark of Furukawa Denki Kogyo Kabushiki Kaisha  
 DBA Furukawa Electric Co., Ltd.

Furukawa reserves the right to make changes to the prices and product(s) described in this document at any time without notice. This document is for informational purposes only and is not intended to modify or supplement any Furukawa warranties or specifications relating to any of its products or services.