



# INVISILIGHT® DROP SOLUTION

*Not seeing is believing.*

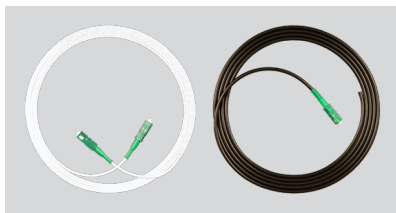
## AN OFS FTTx SOLUTION

EXTENDING OUR AWARD-WINNING OPTICAL FIBER TO AND INTO HOMES, MDUS, AND OFFICES

The **InvisiLight Drop Solution** offers a fast, easy, virtually invisible way to extend an OFS EZ-Bend® drop cable inside by converting it to the InvisiLight solution, to increase customer acceptance and eliminate the need for transition boxes.

## SIMPLIFY YOUR FIBER DEPLOYMENT

### PRODUCTS USED



**EZ-Bend® 3.0 or 4.8 mm  
Cordage and Jumpers**

- Contains same InvisiLight 900 µm fiber used in the InvisiLight ILU Solution, using OFS EZ Bend Optical Fiber, better than ITU G.657B3, 2.5 mm bend radius
- Indoor/Outdoor OFNR/FT-4 rated
- Reel-in-a-Box or SC-APC pre-terminated



**SlimBox® Wall Plate**  
Applied inside Home or Business

- Compact, low visibility profile.
- Surface mount or on to common electrical boxes
- Up to two internal optical adapters (SC footprint)
- Flexible deployment: 2 access ports (top), 2 (bottom) and 3 (back)
- Hidden front screw for fast and secure cover attachment



**Installation System**  
Installation Tool and Adhesive

- Water-soluble, safe, adhesive
- Fast, easy installation
- Dries clear, quickly
- Adheres to common surfaces
- Repositionable during installation

## EZ-BEND® 3.0 OR 4.8 MM CORDAGE AND JUMPERS



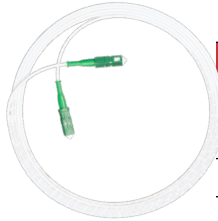
Compact Footprint/  
Discreet Appearance



Easy, Quick Installation



Tight Bend Radius  
with Negligible Loss  
Around Corners



### EZ-Bend Jumper Ordering Information

Product Code	Description
JR5DW001SCASCA $nnn$ F	4.8 mm Riser White Single Fiber SCA to SCA
JRVDW001SCASCA $nnn$ F	3.0 mm White Ruggedized Indoor/Outdoor Single Fiber SCA to SCA

**NOTE:**  $nnn$  = Substituted for length of jumper



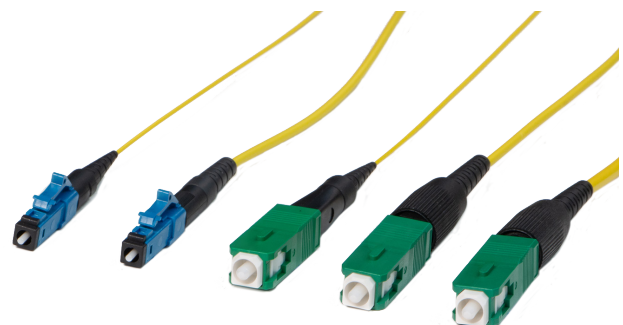
### Premises Cable Reel-in-a-Box Solution Ordering Information

Cable Design	Part Number	Ordering Part Number	Fiber	Jacket Color	Box Weight
<b>3.0 mm EZ-Bend Cable - Indoor/Outdoor Ruggedized</b>					
Dielectric	PR1-001-346-0273	IR30-001M-DRK-4-WPVC-RIB-1500FT	EZ-Bend (G.657.B3)	Black	5.7 kg (13 lbs.)
	PR1-001-347-0273	IR30-001M-DRW-4-WPVC-RIB-1500FT		White	
	PR1-001-229-0273	IR30-001M-DRK-4-WPVC-RIB-4500FT		Black	12.3 kg (28 lbs.)
	PR1-001-578-0273	IR30-001M-DRW-4-WPVC-RIB-4500FT		White	
<b>4.8 mm EZ-Bend Cable - Indoor/Outdoor Ruggedized</b>					
Dielectric	PR1-001-348-0273	IO48-001M-DRK-4-WPVC-RIB-1500FT	EZ-Bend (G.657.B3)	Black	11.1 kg (24.5 lbs.)
	PR1-001-349-0273	IO48-001M-DRW-4-WPVC-RIB-1500FT		White	
Toneable	PR1-001-225-0273	IT48-001A-DRO-4-WPVC-RIB-1300FT		Orange	11.3 kg (24.9 lbs.)
	PR1-001-227-0273	IT48-001A-DRK-4-WPVC-RIB-1300FT		Black	

Use Our Field Installable

### EZ!FUSE SPLICE ON CONNECTORS

- Simple, Fast & Consistent Field Terminations
- No Polishing or Epoxy
- Simplifies Fiber Management



## SLIMBOX® WALL PLATE



Compact Footprint/  
Discreet Appearance



Paintable to Match Your  
Aesthetic



Easy, Quick Installation  
with Two Screws and  
Internal Fiber Guides



### FEATURES AND BENEFITS

- Allows termination of an optical cable or jumper using direct connectorization or splicing (fusion or mechanical) to optical extensions (pigtails) of two optical fibers
- Accommodates up to two internal optical adapters (SC footprint)
- Flexible deployment with O2 access ports on the top, O2 on the bottom and O3 through the back of the module Compatible with wall electrical boxes
- Compact dimensions
- Discreet appearance
- Hidden frontal screw for fast and secure cover attachment to the base
- Internal fiber guides for easy installation
- Can be installed in any vertical plane surface
- Plastic body for high mechanical resistance and efficient design
- Accommodates splice protectors (40 mm)

### PRODUCT DESCRIPTION

The SlimBox Wall Plate serves as a termination point or a demarcation point for optical fiber in an indoor environment. An EZ-Bend® jumper would connect the SlimBox Wall Plate to an desktop ONT and the InvisiLight® ILU solution may be used in case of a distant ONT.

#### SlimBox Wall Plate Ordering Information

Comcode	Product Number	Description
301122826	SLIMBOX-V, INDOOR WALL PLATE-SC	SlimBox Wall Plate without adapter
301122834	SLIMBOX-V, INDOOR WALL PLATE-1F-SM-SCA	SlimBox Wall Plate, 1 SC-APC adapter
301122842	SLIMBOX-V, INDOOR WALL PLATE-2F-SM-SCA	SlimBox Wall Plate, 2 SC-APC adapters

**NOTE:** The front screw cover can be customizable with a customer's logo for larger volume purchases (Contact OFS for more information.)

## INSTALLATION TOOLS



ADHESIVE APPLICATION TOOL



30 mL ADHESIVE TUBES



JONARD MS-6 CORD SPLITTER

Strips the jacket to expose the InvisLight® Optical Fiber

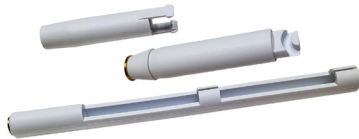
### Adhesive Tool Ordering Information

Category	Comcode	Item
Adhesive Application Tool	301079109	NVSLGHTC-MINI DISPENSING TOOL
30 mL Adhesive Tubes	301083184	NVSLGHTC-TUBE, 30ML ADHESIVEWH/GRTIP EA

### Jonard Cord Splitter Ordering Information

Category	Comcode	Item
Jonard MS-6	301124988	TOOL, MS06-2.0MM-3.0MM BLUE

## ACCESSORIES



PULL-THROUGH TOOL



WALL CAPS AND PLUGS



BEND LIMITERS (OPTIONAL)



For additional information please contact your sales representative.

You can also visit our website at [www.ofsoptics.com](http://www.ofsoptics.com)  
or call 1-888-FIBER-HELP  
(1-888-342-3743) from inside the USA  
or +1-770-798-5555 from outside the US.  
EMEA Specific: +49 (0) 228 7489 201

InvisLight, EZ-Bend, and SlimBox are registered trademarks of OFS FITEL, LLC.

OFS reserves the right to make changes to the prices and product(s) described in this document at any time without notice.

This document is for informational purposes only and is not intended to modify or supplement any OFS warranties or specifications relating to any of its products or services.

Copyright © 2021 OFS FITEL, LLC  
All rights reserved, printed in USA.

OFS Marketing Communications

Date: 09/21

