

Splice Data Explorer 2

User Manual

Issue 6

FURUKAWA
ELECTRIC

Contents

1. Introduction	2
1.1 PC Requirements	2
1.2 Application Install	3
2. Functions	5
2.1 Remote Control	5
2.1.1 Connecting Fusion Splicer	5
2.1.2 Control Buttons	6
2.1.3 Capture and Zoom	6
2.2 Fusion Program	8
2.2.1 Fusion Program List	9
2.2.2 Edit Parameter	9
2.2.3 Save File / Load File	10
2.3 Heater program	11
2.3.1 Heater Program List	11
2.3.2 Edit parameter	12
2.3.3 Save File / Load File	12
2.4 Splice History	13
2.4.1 History List	13
2.4.2 Splice Data	13
2.4.3 Save Selected Data	13
2.4.4 Save Batch Data	14
2.4.5 Save Single Data	14
2.4.6 Print	14
2.5 Arc Check History	15
2.5.1 History List	15
2.5.2 Arc Check Data	15
2.5.3 Save Batch Data	16
2.5.4 Save Single Data	16
2.5.5 Print	16
2.6 Captured Images	17
2.6.1 Image List	17
2.6.2 Save File	17
2.7 Failure Data history	18
2.7.1 History List	18
2.7.2 Failure Data	18
2.7.3 Save Batch Data	19
2.7.4 Save Single Data	19
2.7.5 Print	19
2.8 Software Update	20
2.8.1 Update	20
2.9 Remote Maintenance	21
2.9.1 Connection Method	21

1. Introduction

This manual is described about Splice Data Explorer2 to control FITEL S179 series / S185 series / S124 series.

This application does not support S178/S153/S123/NINJA series. Please use previous Splice Data Explorer to if you have S178/S153/S123/NINJA series.

1.1 PC Requirements

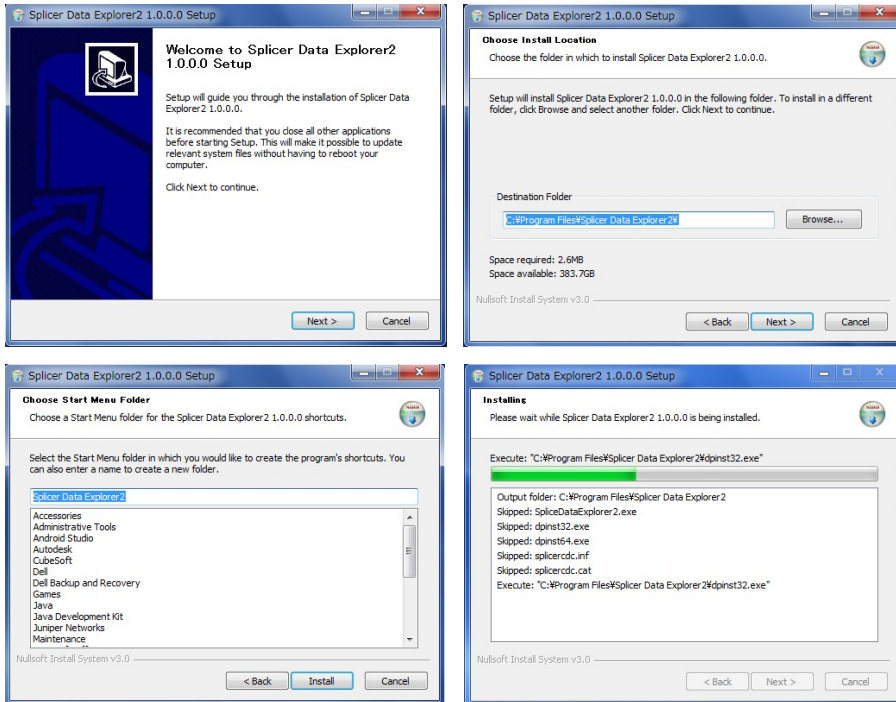
This application runs in the following environment.

OS	Microsoft Windows 10 (32/64bit)
.Net Framework	Version 3.5 SP1
Screen Resolution	1024 x 768 pixel or above
USB	2.0 / 3.0 Port

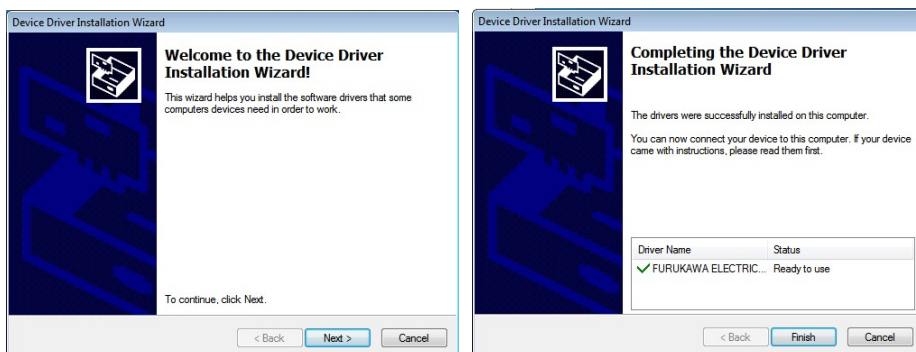
If the application does not start, please install .Net Framework3.5.

1.2 Application Install

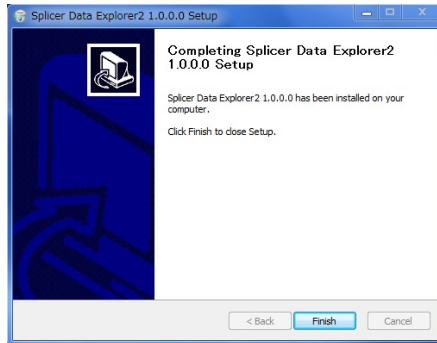
1. Execute SDE2Installer.exe to install Splice Data Explorer 2.
2. When the setup starts, click [Next(N)>]→[Next(N)>]→[Install].



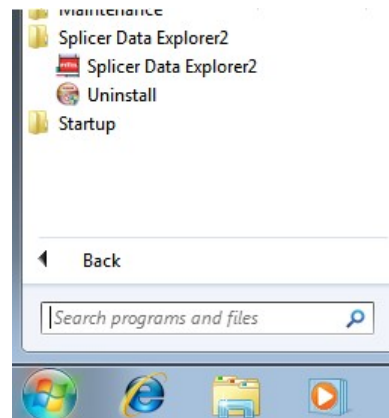
3. Next step is Installation of the device driver. Click [Next(N)>]→[Finish]. If the driver already has been installed, you can select [Cancel].



4. After installation click [Finish].



5. To start the application, click the icon on the desktop or select the program from the start menu.

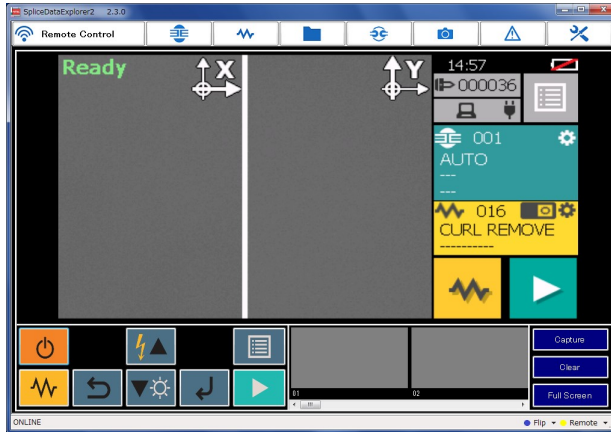


6. The device driver is installed automatically when the fusion splicer is connected to PC.

2. Functions

2.1 Remote Control

The remote control function can control the fusion splicer and display the screen of the fusion splicer.

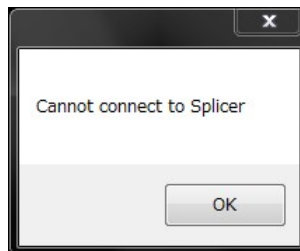


2.1.1 Connecting Fusion Splicer

When the fusion splicer is connected to PC and turn on the power, the message [OFFLINE] becomes [ONLINE] in the bottom left of the screen.

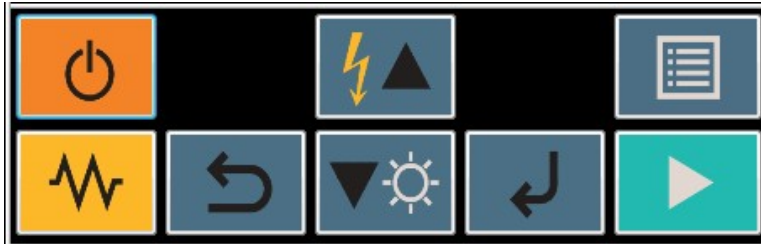


The screen is not change by clicking the menu button when the fusion splicer is not connected. If the following message is displayed, please reconnect the fusion splicer to another USB port.



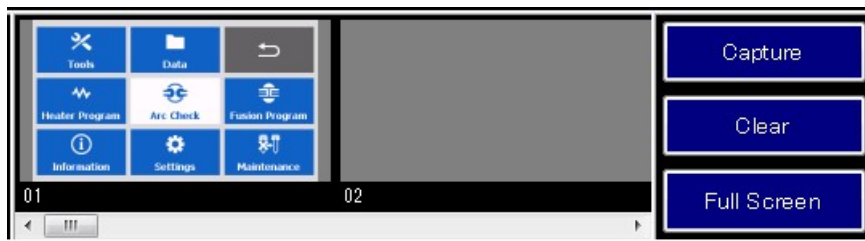
2.1.2 Control Buttons

Clicking this button perform the same operation as when you press the key of the fusion splicer.

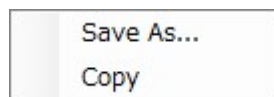


2.1.3 Capture and Zoom

The current screen is captured by clicking [Capture]. Number of screen to be captured is up to 20. After 20 screens, the first captured image is overwritten.

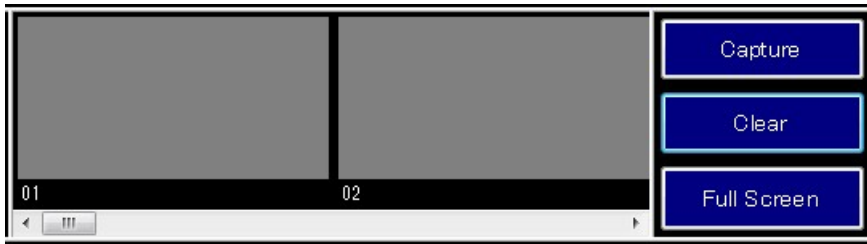


Right clicking on the captured image, you can save the file and copy to the clip board. In the case of saving the file, the save dialog is displayed and you can select image type from PNG/BMP/GIF/JPG

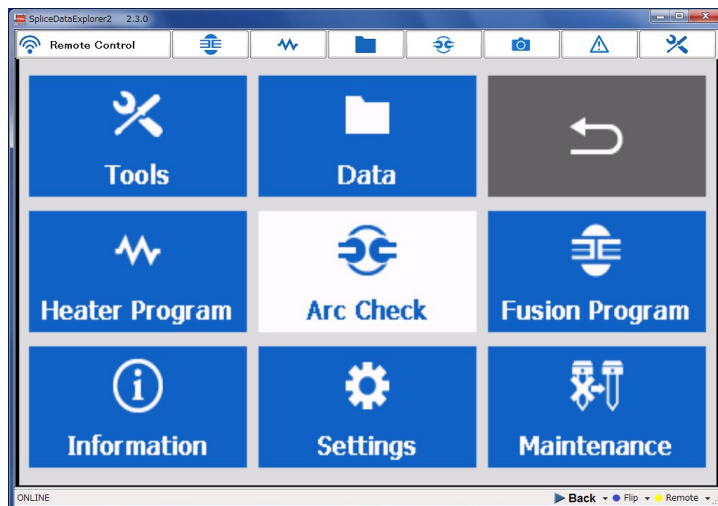


The captured image can paste to the Microsoft Excel and PowerPoint by drag and drop.

The entire captured images are cleared by clicking [Clear].

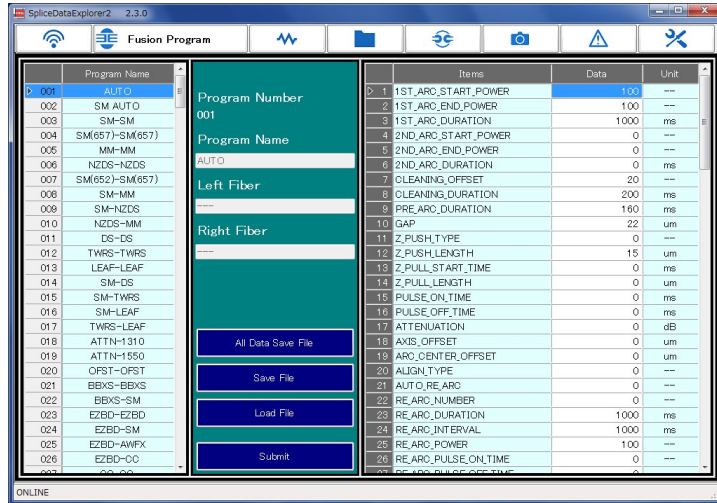


The screen image is zoomed by clicking [Full Screen]. In the full screen mode, because the control buttons are not displayed, use the key of the fusion splicer. The screen returns to original size by clicking [Back].



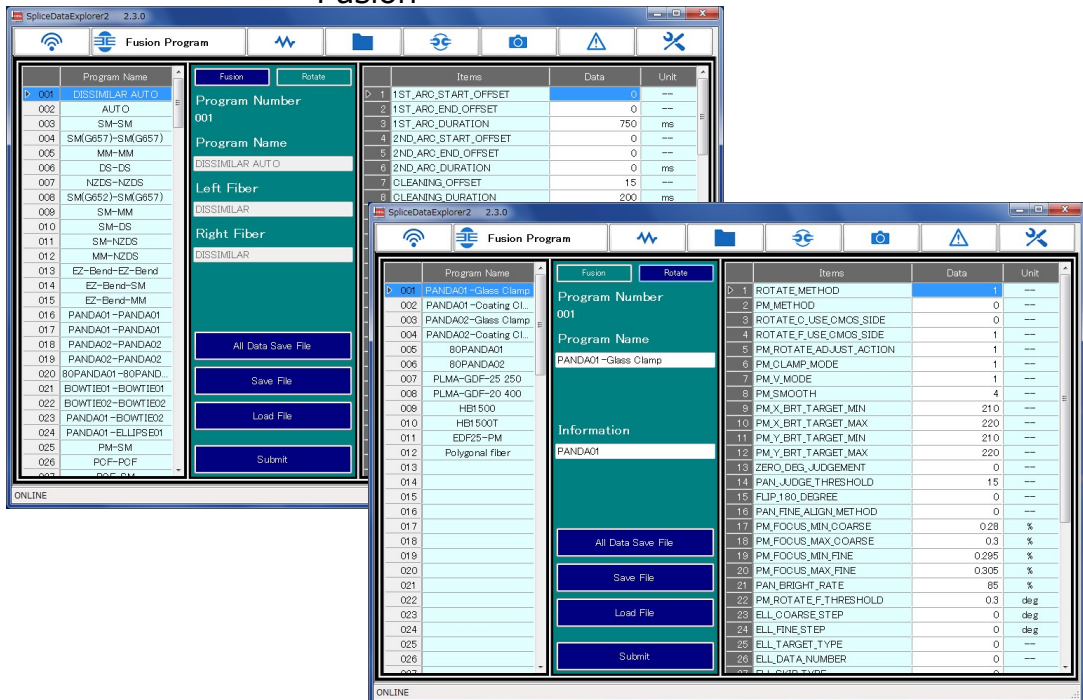
2.2 Fusion Program

The fusion program is displayed, the parameter can be edited.



The rotate menu is displayed when connecting S185PM / PMLDF.

Fusion



Rotate

2.2.1 Fusion Program List

List of fusion programs registered in the fusion splicer is displayed in the left side of the screen. Clicking the fusion program name, its parameters are displayed on the right side of the screen, and can be edited.

When the parameter is changed, the color of the program name is changed to make it easier to distinguish.

Default		Changed	
	Program Name		Program Name
001	AUTO	001	AUTO
002	SM AUTO	002	SM AUTO

2.2.2 Edit Parameter

Program name, left fiber name, right fiber name, each parameter can be changed. When the parameter is changed, the color of the program name is changed. If the input value is invalid, the color is changed to red.

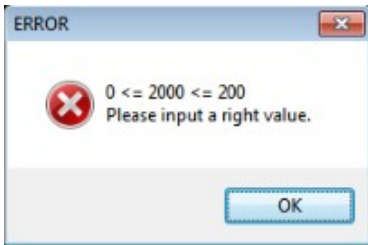
Default

	Items	Data	Unit
1	1ST_ARC_START_POWER	100	--
2	1ST_ARC_END_POWER	100	--

Changed

	Items	Data	Unit
1	1ST_ARC_START_POWER	101	--
2	1ST_ARC_END_POWER	100	--

Invalid Value



	Items	Data	Unit
1	1ST_ARC_START_POWER	100	--
2	1ST_ARC_END_POWER	100	--

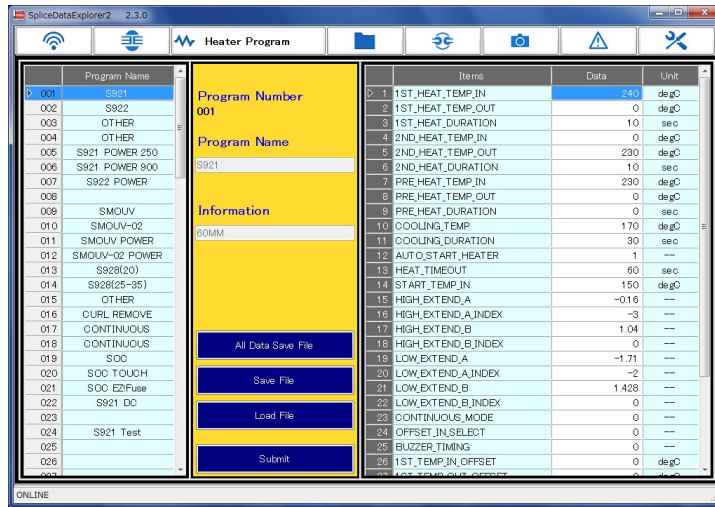
Changed parameters are applied by clicking [Submit]. If you have moved to another menu without submitting, changed parameters will be discarded.

2.2.3 Save File / Load File

Currently displayed fusion program can be saved to the file, and also can be read from the saved file. This file is the same as exported / imported file by the fusion splicer, mutual is available.

2.3 Heater program

The heater program is displayed, the parameter can be edited.



2.3.1 Heater Program List

List of heater programs registered in the fusion splicer is displayed in the left side of the screen. Clicking the fusion program name, its parameters are displayed on the right side of the screen, and can be edited.

When the parameter is changed, the color of the program name is changed to make it easier to distinguish.

Default		Chenged	
	Program Name		Program Name
001	S921	001	S921
002	S922	002	S922

2.3.2 Edit parameter

Program name, information, each parameter can be changed. When the parameter is changed, the color of the program name is changed. If the input value is invalid, the color is changed to red.

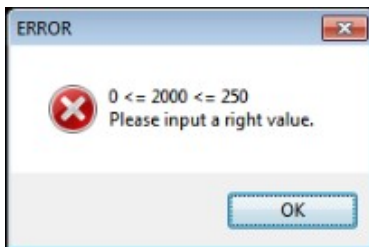
Default

	Items	Data	Unit
1	1ST_HEAT_TEMP_IN	270	degC
2	1ST_HEAT_TEMP_OUT	260	degC

Changed

	Items	Data	Unit
1	1ST_HEAT_TEMP_IN	271	degC
2	1ST_HEAT_TEMP_OUT	260	degC

Invalid Value



	Items	Data	Unit
1	1ST_HEAT_TEMP_IN	270	degC
2	1ST_HEAT_TEMP_OUT	260	degC

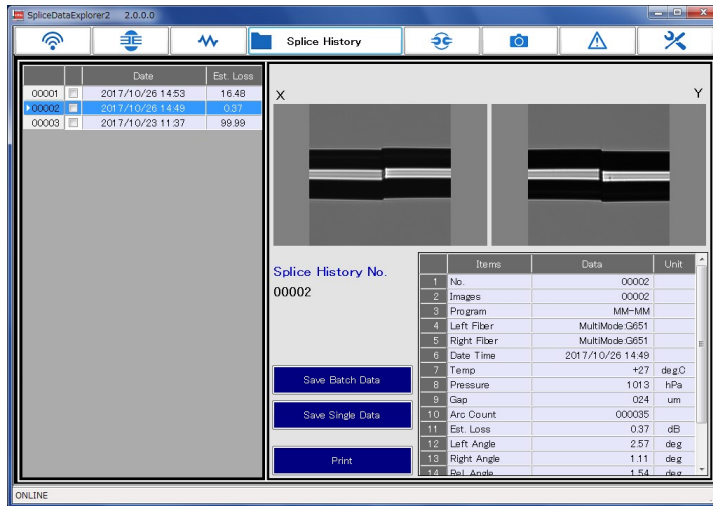
Changed parameters are applied by clicking [Submit]. If you have moved to another menu without submitting, changed parameters will be discarded.

2.3.3 Save File / Load File

Currently displayed heater program can be saved to the file, and also can be read from the saved file. This file is the same as exported / imported file by the fusion splicer, mutual is available.

2.4 Splice History

The splice history data stored in the fusion splicer can be displayed, saved, and print.



2.4.1 History List

List of splice history is displayed in the left side of the screen. Clicking the date and time, its detailed information is displayed on the right side of the screen.

2.4.2 Splice Data

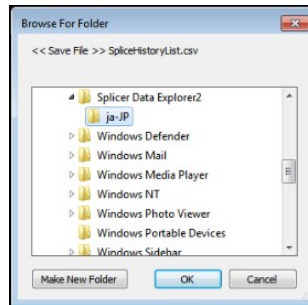
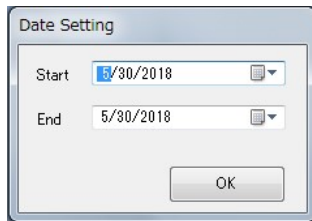
The images after splicing are displayed in the top right of the screen. The detailed information is displayed in the bottom right of the screen.

2.4.3 Save Selected Data

The selected data are saved in CSV format and the image is saved in PNG format. Fill the check box and click the [Save Batch Data] button.

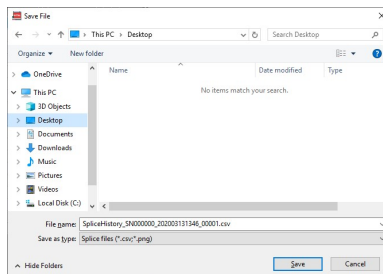
2.4.4 Save Batch Data

This function outputs the specified range of the splice history data in CSV format. The range is set by the date, and extract the splice data between the start and end date. The image is not included.



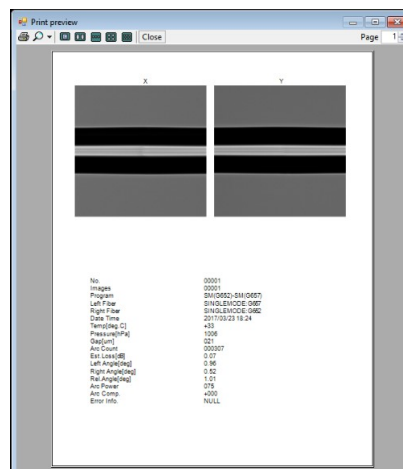
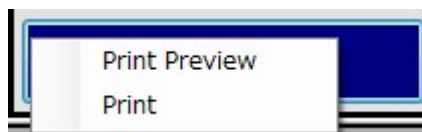
2.4.5 Save Single Data

This function saved splice data displayed currently in CSV format and PNG format or Excel file.



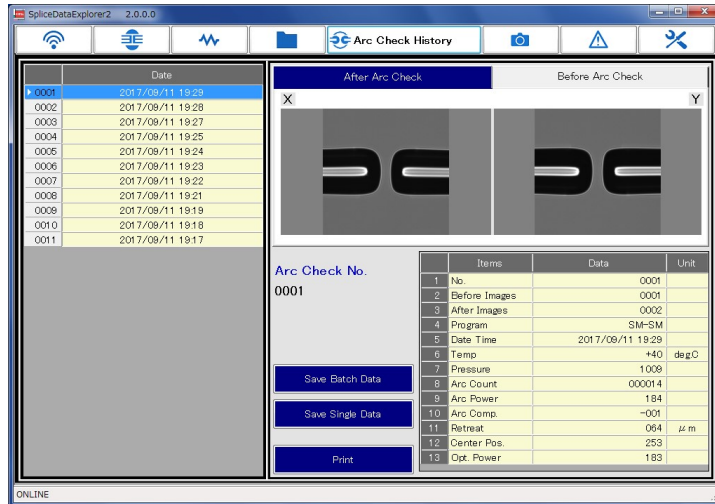
2.4.6 Print

The menu to select Preview and Print is displayed by clicking [Print].



2.5 Arc Check History

The arc check history data stored in the fusion splicer can be displayed, saved, and print.



2.5.1 History List

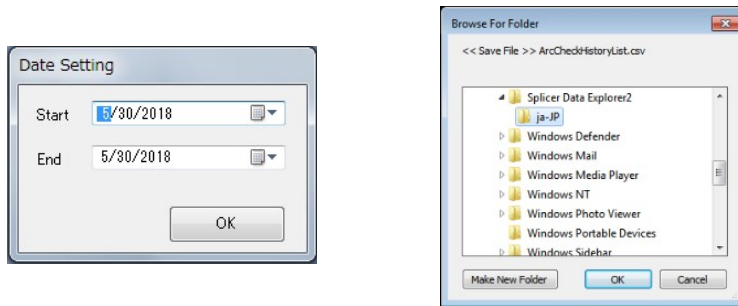
List of arc check history is displayed in the left side of the screen. Clicking the date and time, its detailed information is displayed on the right side of the screen.

2.5.2 Arc Check Data

The images after arc check and before arc check are displayed in the top right of the screen. The detailed information is displayed in the bottom right of the screen.

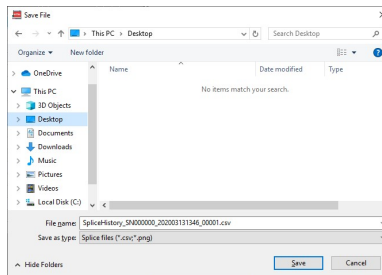
2.5.3 Save Batch Data

This function outputs the specified range of the arc check history data in CSV format. The range is set by the date, and extract the arc check data between the start and end date. The image is not included.



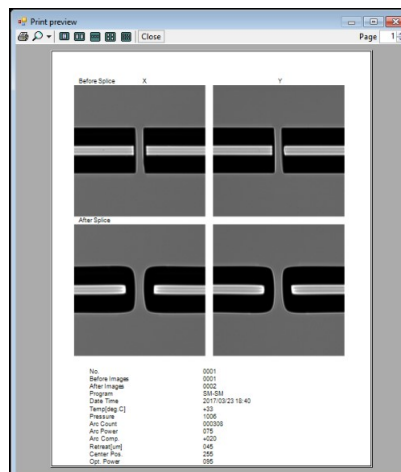
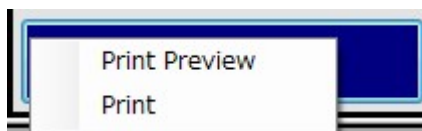
2.5.4 Save Single Data

This function saves arc check data displayed currently in CSV format and PNG format or Excel file.



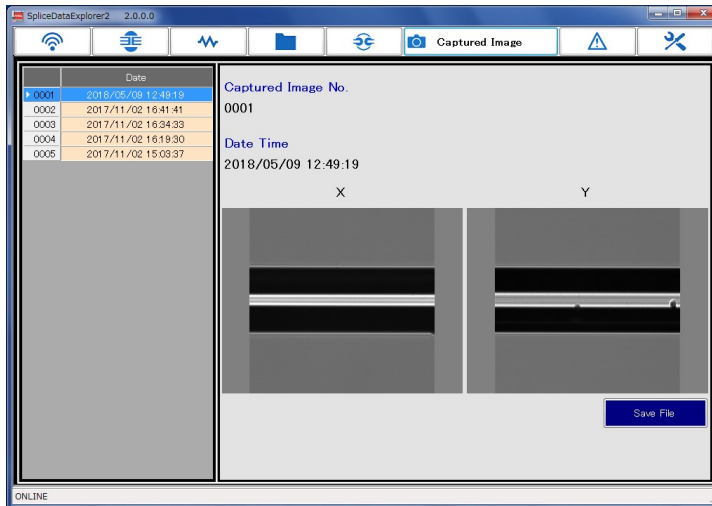
2.5.5 Print

The menu to select Preview and Print is displayed by clicking [Print]



2.6 Captured Images

The captured images stored in the fusion splicer can be displayed and saved.

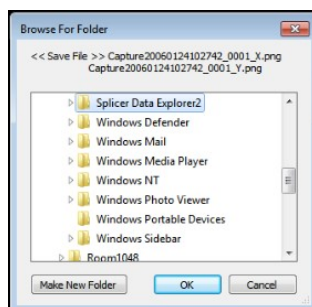


2.6.1 Image List

Image list is displayed in the left side of the screen. Clicking the date and time, its image is displayed on the right side of the screen.

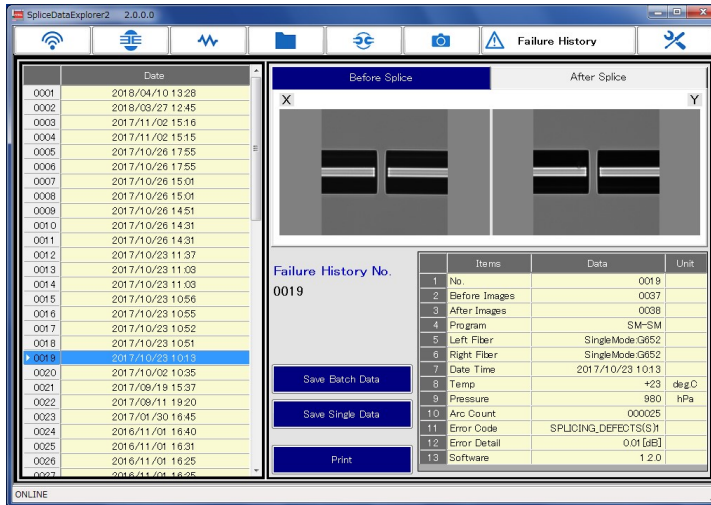
2.6.2 Save File

This function saves image displayed currently in PNG format.



2.7 Failure Data history

The failure history data stored in the fusion splicer can be displayed, saved, and print.



2.7.1 History List

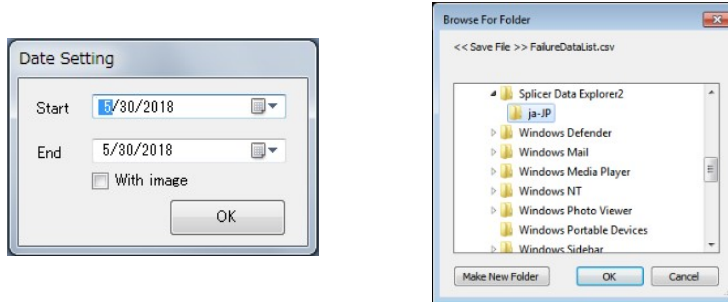
List of failure history is displayed in the left side of the screen. Clicking the date and time, its detailed information is displayed on the right side of the screen.

2.7.2 Failure Data

The images before and after splicing are displayed in the top right of the screen. The detailed information is displayed in the bottom right of the screen.

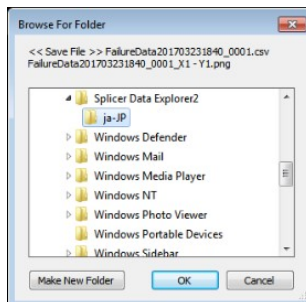
2.7.3 Save Batch Data

This function outputs the specified range of the failure history data in CSV format. The range is set by the date, and extract the splice data between the start and end date. The image is not included.



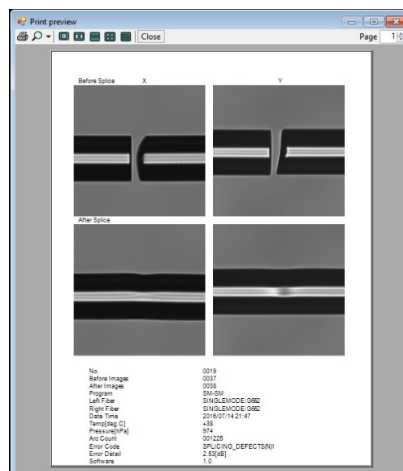
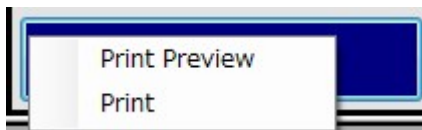
2.7.4 Save Single Data

This function saved splice data displayed currently in CSV format and PNG format.



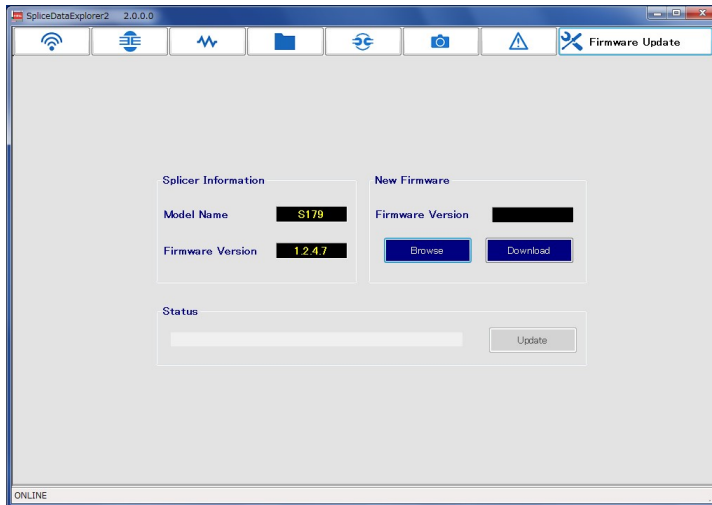
2.7.5 Print

The menu to select Preview and Print is displayed by clicking [Print].



2.8 Software Update

This function updates the software of fusion splicer from internet or specified file.



2.8.1 Update

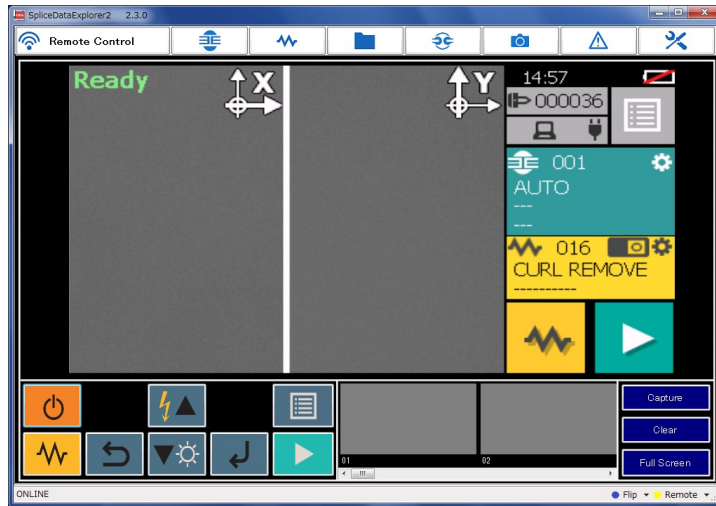
Click [Download] if updating from the internet, click [Browse] if updating from the file.

When the latest software is found, [Update] button is enabled. Click [Update] to start updating.

The fusion splicer restarts automatically after update is complete, and new software is applied. (Turn the power manually if the fusion splicer does not restart.)

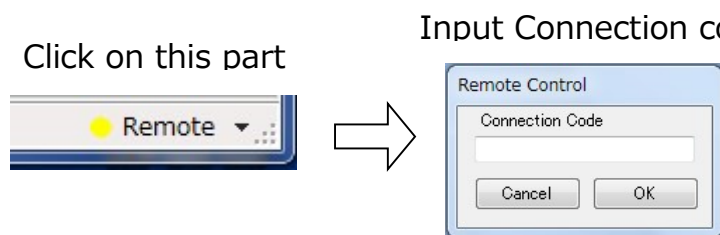
2.9 Remote Maintenance

This application can be used to remotely maintain optical fiber fusion splicer.

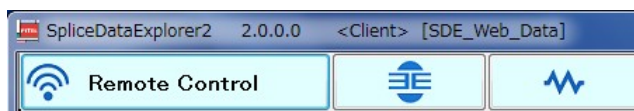


2.9.1 Connection Method

Click [Remote] with the fusion splicer connected. Enter the Connection Code received in advance in the dialog. The menu button changing to light blue means the remote control becomes possible.



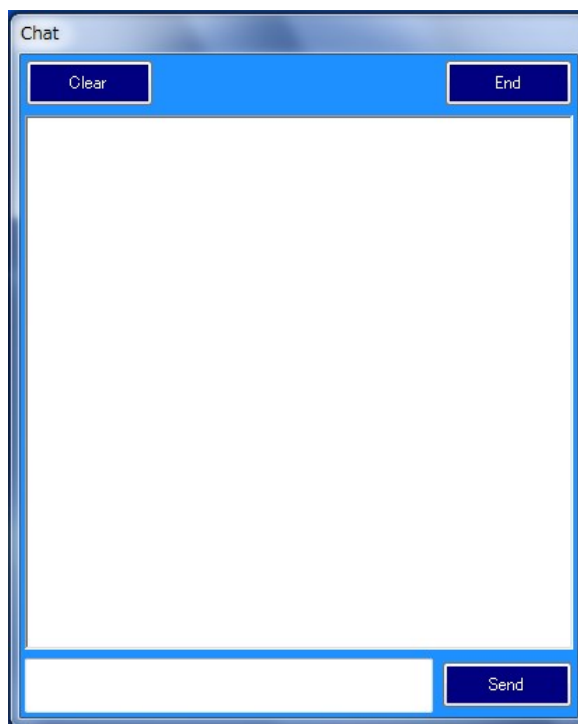
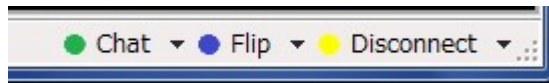
Remote controllable state



2.9.2 Chat

In remote control mode, the [O Chat] button on the lower right of the screen is displayed. The chat screen is displayed by clicking [O Chat] button. (The chat screen is not displayed if chat partner is not connected). Click [Send] button or press Enter key to send a message to the chat partner, and your message will be displayed on the right of the screen, and a message from the partner is displayed on the left side. The chat screen is closed by clicking "End" button, and the chat partner's screen is also closed at the same time.

Click on this part



For sales and service information,
Contact FURUKAWA ELECTRIC CO., LTD.
Or your local representative.

**FURUKAWA
ELECTRIC**

Sales Department:

Furukawa Electric Co., Ltd.

2-3, Marunouchi 2Chome, Chiyoda-ku, Tokyo 100-8322 JAPAN

TEL : +81-3-3286-3265 FAX : +81-3-3286-3978