

S233 Ribbon Splitter Operating Instructions

- Please read entire manual prior to usage.
- This manual must be kept with the S233 Ribbon Splitter.

Safety Instructions

This manual contains the complete operating and maintenance instructions for S233 Ribbon Splitter. Please review this manual carefully before operating the S233 Ribbon Splitter .

The following safety instructions must be observed whenever this product is operated, serviced or repaired. Failure to comply with any of these instructions or with any precaution or warning contained in this manual is in direct violation of the standards of the design, the manufacture and the intended use of the instrument. THE FURUKAWA ELECTRIC CO., LTD. assumes no liability for the customer's failure to comply with these requirements.

Safety Instructions



CAUTION

Failure to comply with any of the instructions, which are indicated by this symbol, may cause serious injury or damage to the machine.

Please contact THE FURUKAWA ELECTRIC CO., LTD. with any questions relating to the description of this manual.

In no case will THE FURUKAWA ELECTRIC CO., LTD. be liable to the buyer, for any consequential or indirect damage which is caused by product failure, malfunction, or any other problem.



CAUTION

- Avoid soaking the S323 with water. Doing so may cause malfunction.
- Do not use in a humid, dirty or vibration site. Doing so may cause fire, electrical shock or malfunction.
- Do not drop, throw, and punish. Doing so may cause malfunction.
- Ensure that cleaning the S233 Ribbon Splitter and splitted ribbon fiber, before splitting. If not doing so, it may occur that fiber breaking or irreguler splitting, because of dust.
- Do splitting slowly. If ribbon fiber cannot be split smoothly, interrupt splitting and do cleaning. If smoothness is not recovered, it has the possibility that S233 Ribbon Splitter's malfunction or ribbon fiber's transforming. Stop splitting till the cause is cleared. If splitting is done with continue, it may occur fiber breaking or add the damage to fiber.
- Do cleaning S233 Ribbon Splitter by exclusive brush, not using another tool such as screwdriver.
- S233 Ribbon Splitter is designed with special attention for not damage to the fiber. But there are possibility of added the damage to the fiber, in condition of fiber, cleaning, and S233 itself. So please use S233 with considering
- There are possibility of add the damage to the fiber, or impossible to split, because of condition of fiber, cleaning, and S233 itself. So please use S233 with deep understanding of those matters.
- Don't apply S233 for living line.

1. Components

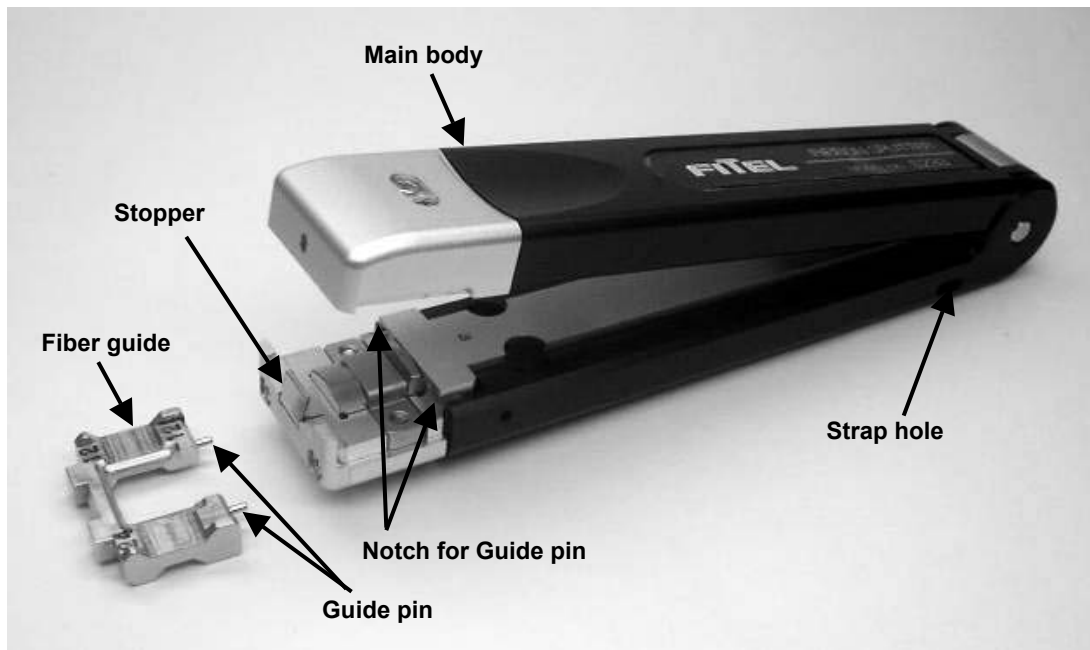
1.1. Standard components

Part	Part No.	Quantity	Product No.			Description
			S233A	S233B	S233C	
Main body	S233X-01	1	<input type="checkbox"/>	<input type="checkbox"/>	<input type="checkbox"/>	
Brush	S233X-02	1	<input type="checkbox"/>	<input type="checkbox"/>	<input type="checkbox"/>	
Case	S233X-03	1	<input type="checkbox"/>	<input type="checkbox"/>	<input type="checkbox"/>	
Fiber guide A	S233X-11	1	<input type="checkbox"/>	<input type="checkbox"/>	<input type="checkbox"/>	Front: 4 ribbon is split into 2 ribbons. Back: 4 ribbon is split into 3 ribbon and a fiber
Fiber guide B	S233X-12	1	<input type="checkbox"/>	<input type="checkbox"/>	<input type="checkbox"/>	Front: 8 ribbon is split into 4 ribbons. Back: 4 ribbon is split into 2 ribbons
Fiber guide C	S233X-13	1	<input type="checkbox"/>	<input type="checkbox"/>	<input type="checkbox"/>	Front: 24 ribbon is split into 12 ribbons. Back: 12 ribbon is split into 6 ribbons
Operating instructions	S233X-81	1	<input type="checkbox"/>	<input type="checkbox"/>	<input type="checkbox"/>	

1.2. Options

Part	Part No.	Quantity	Description
Brush	S233X-03	1	10 pieces
Fiber guide A	S233X-11	1	Front: 4 ribbon is split into 2 ribbons. Back: 4 ribbon is split into 3 ribbon and a fiber
Fiber guide B	S233X-12	1	Front: 8 ribbon is split into 4 ribbons. Back: 4 ribbon is split into 2 ribbons
Fiber guide C	S233X-13	1	Front: 24 ribbon is split into 12 ribbons. Back: 12 ribbon is split into 6 ribbons

2. External description



3. Applicable fiber (*1)

	Specification □ characteristic
Material	Silica based fiber with UV coating
Diameter	Fiber diameter: 0.125mm
	Coating diameter: 0.250mm
	Thickness of ribbon: 0.28 to 0.4mm
	Pitch: 0.25mm
Number of fiber (*2)	4 □ 8 □ 12 □ 24

(*1) There are possibility of added the damage to the fiber, or impossible to split, because of condition of fiber, cleaning, and S233 itself. So please confirm the split condition previously.

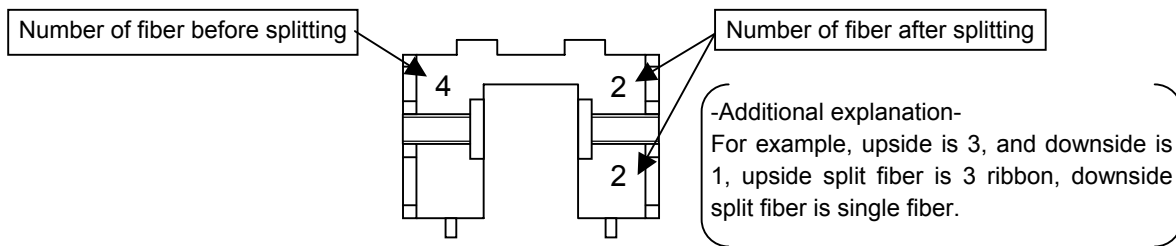
(*2) Required suitable Fiber guide for splitting purpose

4. Operating instructions

4.1. Install of Fiber guide

1) Explanation of Fiber guide

Indicated number that located left side (refer to below figure) is number of fiber before splitting. Both upper and bottom numbers that located right side are number of fiber after splitting.

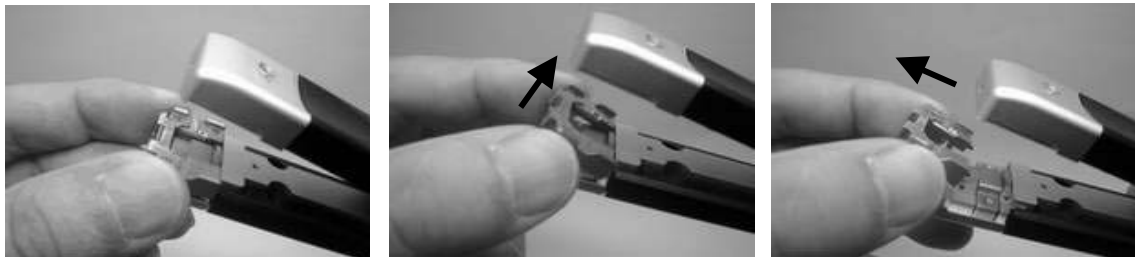


2) How to remove the fiber guide

Pinch the tip of fiber guide from both sides.

Pick the fiber guide toward to upside, and detach from stopper.

Pull the fiber guide from main body.



3) How to install the fiber guide

Install the guide pin into the notch, and push the fiber guide toward downside for fixing by stopper.

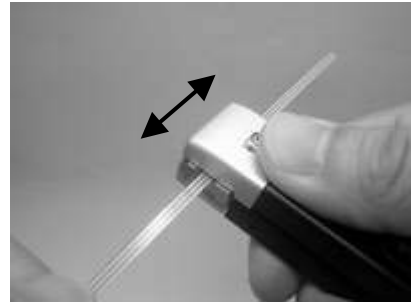


4.2. How to split

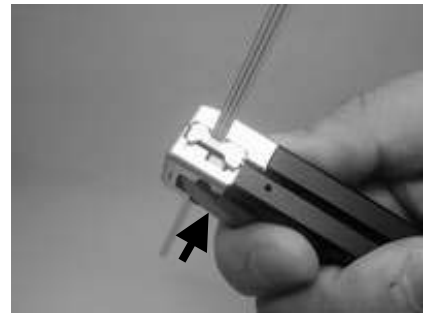
- 1) Set the ribbon fiber into the groove of fiber guide, and then close the S233 gently. At this point, don't grip strongly. If you do so, the blade may split at improperly position.



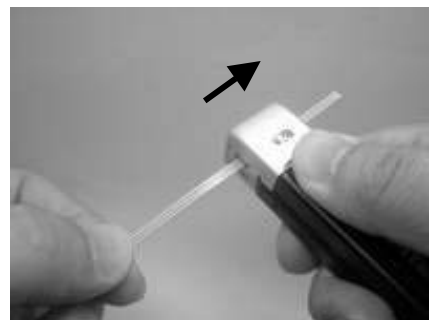
- 2) Confirming that S233 doesn't pinch the ribbon, with moving slightly. If S233 doesn't move well (nothing the sticking), do procedure 1) again.



- 3) For splitting the ribbon fiber, grip the S233 strongly and then the blade, which located in the bottom unit enter into the ribbon fiber.



- 4) After 3), slide the S233 with gripping, till the point that you want to split.
* The S233 can split both sides.



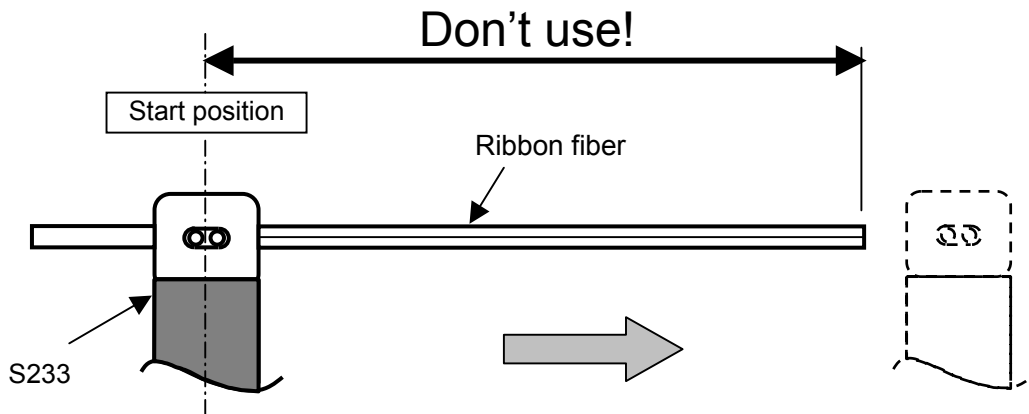
5. Maintenance

Sweep the dust on the blade with brash every splitting.

6. Caution of using the split ribbon fiber

There are possibility of add the damage to the split fiber which split by blade. Thus don't use this portion in your application.

We don't take responsibility if accident occurs, with using split fiber.



7. Contact

For sales and service information□contact THE FURUKAWA ELECTRIC CO.,LTD.or your local representative.

 **THE FURUKAWA ELECTRIC CO., LTD.**

Head Office□
6-1 Marunouchi 2-chome, Chiyoda-ku, Tokyo, 100-8322 Japan
Splicing Technology Department FITEL Interconnectivity Division
TEL□81-3-3286-3445 FAX□81-3-3286-3708

Sales and Marketing Department, Oversea Telecommunications Division
TEL□81-3-3286-3223 FAX□81-3-3286-3749